



Servo Disc Coupling  
Encoder type Flexible Coupling  
XY Table

# Encoder type Flexible Coupling

## FEATURES

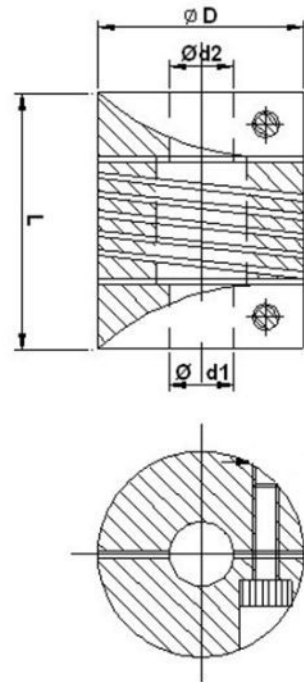
- High quality Aluminium alloy selected
- No Backlash
- Parallel offset up to 0.2mm
- Angular offset up to 2 degrees
- Transmission of constant velocity
- Tortionally stiff
- One piece structure

## APPLICATIONS

- Stepper & Synchronous motor
- Encoder Shaft
- Rotary position transmitter
- Tachogenerator

## OPTIONS

- Material: Stainless steel, Nylon
- High capacity Torque coupling
- Special size available



## STANDARD COUPLING DATA

Sr. No.	Diameter D(mm)	d1 H7 (mm)	d2 H7 (mm)	Length L(mm)
1	12.00	4.00	4.00	26.00
2	14.00	6.00	6.00	20.00
3	20.00	6.00	6.00	28.00
4		6.00	8.00	
5		6.35	8.00	
6		6.00	6.35	
7		6.35	6.35	
8	25.00	6.00	8.00	32.00
9		6.00	10.00	
10		8.00	8.00	
11		10.00	10.00	
12		6.00	9.52	
13		6.00	6.35	
14		6.00	10.00	
15		8.00	10.00	
16		6.35	8.00	
17		6.35	10.00	
18	32	10.00	14.00	40.00
19	35	11.00	16.00	50.00